



# **ADDITIONAL RULES**

## **WAKEBOARD BOAT**

**2015**

**Approved by the Council on 2015-03-12**

**INDEX**

1 Appendices .....3  
2 General .....3  
3 Categories.....4  
4 Running Order & Heat System (Replaced IWWF Wakeboard World Rule 5).....4  
5 Protests (Replaces IWWF Wakeboard World Rule 15).....4  
6 Wakeboard Course .....5  
7 Homologation ..... **Erreur ! Signet non défini.**  
8 E&A Wakeboard Ranking List .....7  
9 E&A Championships .....7

## **IMPORTANT!**

Please note that from 2013 IWWF Region E&A will be following the IWWF Wakeboard World Rules. Therefore, when reviewing this document it is essential that it is review in conjunction with the IWWF Wakeboard World Rules.

## **1 APPENDICES**

A number of appendices are an integral part of these Rules but published and updated as separate documents. These are:

- Rules for Judges
- Heat System
- Ranking Rules
- Pre-Event Homologation Form
- Post-Event Homologation Form

## **2 GENERAL**

### **2.1 Applicability of the Rules**

The IWWF Wakeboard World Rules and these Additional Rules apply to the Europe & Africa Championships and to all other homologated competitions in Europe & Africa, unless varied elsewhere in the Additional Rules.

Where the words "World" or "IWWF" appear in the IWWF Wakeboard World Rules these are to be read as "Europe & Africa". Where the words "Region" or "Regions" or "Confederation" or "Confederations appear these are to be read as "Federation" or "Federations".

These IWWF E&A Additional Rules Wakeboard Boat are supplementary to the general IWWF E&A regulations including the Bye-Laws, Rules of Eligibility, Anti-Doping Policy, Letter of Agreement and Obligations for Titled Events, and Guidelines. In case of conflict between a regulation in these Additional Rules and a general IWWF E&A regulation, the latter shall apply. The general IWWF E&A regulations must be applied by organizers, judges and riders at all wakeboard events.

### **2.2 Discharge of Liability**

At each national or international event, all competitors, or if the rider is under 18 years of age his/her parent or team captain, must sign a discharge of liability for the organizer and the host federation in case of accident, material damages, or moral or physical tort, in the domain of the competition. All organizations, federations, persons or institutions involved in the organization of an event who encounter an illicit deed of a competitor, are obligated to use the local Constabulary or judicial authorities in order to judge all litigation and charges against the competitor. A copy of the filed report shall be forwarded to his own federation who will prohibit the competitor's access to all events until such time as the litigation is settled.

### **2.3 Suggestions**

Riders are encouraged to make any suggestions and raise questions about any concern to any judge or to the IWWF E&A Wakeboard Boat Council. Contact information for officials and members of the Council is available on the Council's website at [www.wakeboardcouncil.com](http://www.wakeboardcouncil.com). Suggestions regarding these rules must be brought up before November 1st for changes of the rules for the following year.

## **2.4 Extreme Weather Conditions (Replaces second paragraph of the IWWF Wakeboard World Rule 23.0)**

In case of extreme weather conditions the Chief Judge with the approval of the majority of the judges can decide to cancel part or all of the competition and decide a best option on how to define the final placement of the riders, either by completing the competition on an alternative date or location, or based on the completed rounds.

## **3 AGE CATEGORIES**

### **3.1 Youngsters (Boys & Girls)**

This category is for promotional purposes only and will not be counted for towards team scoring, ranking or titles.

9 years old and under - if you are 9 years or under on December 31 in the current year the championships are held.

**All other age categories are defined by the IWWF Wakeboard World Rules**

## **4 RUNNING ORDER & HEAT SYSTEM**

Wakeboard competitions will use a heat system.

When applicable, for the qualification round groups composition, riders will be seeded from previous official ranking list (recognized by the federation, which sanctions/homologates the competition) if some of the riders are not ranked, they will be randomly placed after the ranked riders. This will create a temporary ranking/seeding that will be applied for all of the current competition.

Where there is no ranking available, the running order for the first round of competition will be randomly selected by either computer or drawn from a ballot in order to compete in individual heats.

The number of riders in each heat is dependent on the total number of riders entered. No heat shall exceed 6 riders, where possible heats of 4 or 5 are preferred.

An equal amount of riders from each heat will then advance to the semi-finals and finals. The LCQ, Semi-finals and Finals will be selected from placement **not** scores.

Advancing riders will be seeded from placement and then heats will be selected using the following method. 2 Heats 2-1-1-2 or for 3 heats 3-2-1-1-2-3 and so forth. This allows for the heats to be mixed throughout the event.

The heat system will be the World rules heat system (appendix 2).

## **5 PROTESTS (REPLACES IWWF WAKEBOARD WORLD RULE 15)**

Protests shall be made to the Chief Judge only by a team Captain/ Manager. A protest must be made in writing, must state the reason(s) for the protest, and must be filed as soon as possible, but no later than 10 minutes after the occurrence or after the results of the event are announced in the event that the protest is regarding the results.

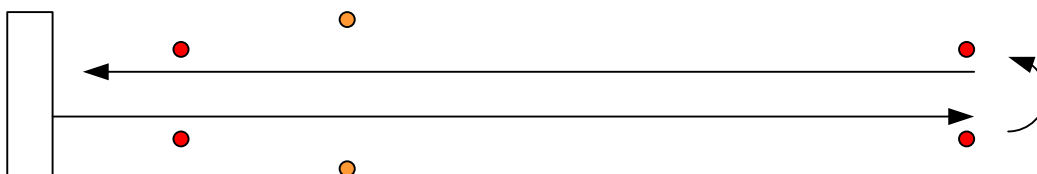
Protests shall be allowed only for failure of the judges and calculators to comply with these rules and only if this non-compliance would have an adverse effect on a rider. No protests are permitted regarding the scoring by the Boat Judges.

A correction of an error in the computation of scores shall not be considered a protest and the correction shall be made on the approval of the Chief Judge and Calculator within 10 minutes after the results are announced. It is up to the Chief Judge only to agree the inspection of scoring sheets

Protests must be accompanied by the approximate equivalent in local currency of 50 Euros - This amount will be refunded if the Chief Judge upholds the protest.

## 6 WAKEBOARD COURSE

### 6.1 Course Dimensions - Without Features (Replaces IWWF Wakeboard World Rule 18.2)



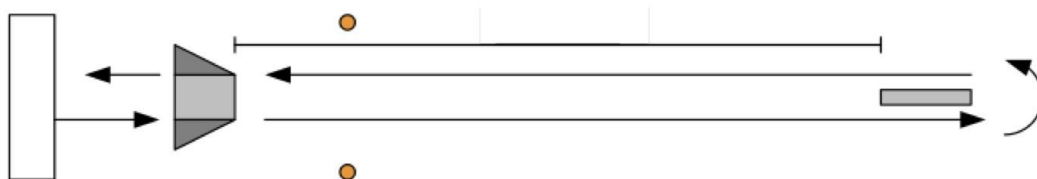
A pair of start buoys 10 metres apart shall mark the beginning of the wakeboard course from each direction. Another pair of buoys 10 metres apart shall signify the end of the course. The distance from the start to the end buoys, may range from 300 to 400 metres (31-41 seconds at 35 km/hour or 22 miles/hour).

The Chief Judge with the assistance of the Chief Driver may make the decision to shorten the course, typically by one trick each pass, may be as a result of the event site, lack of event time, poor weather conditions or other reasons. Riders will be informed on the official notice board.

The EA Championships will use the same course length as the World Rules.

Bright orange buoys are recommended for the start and end buoys. A rider's first and second pass will begin after he or she rides around or between the start buoys, as long as the first trick is initiated after those buoys.

### Course Dimensions with Features (Replaces IWWF Wakeboard World Rule 18.2)



The end of a feature shall establish the approximate area of the beginning of the wakeboard course from each direction. The end of the pass shall be signified by the beginning of another feature.

A pair of cut off buoys, approximately 50 metres apart, will indicate the point after which the tow boat will not be able to get up to speed for a rider to continue his run in the second pass. Bright green buoys will be used for the cut off buoy. The position of the cut off buoys will be determined by the Chief Judge and Chief Boat Driver.

## **7 HOMOLOGATION**

### **7.1 General**

A competition is homologated through the following steps:

1. A pre-homologation dossier is sent to the IWWF E&A Wakeboard Boat Council in the appropriate format available at [www.wakeboardcouncil.com](http://www.wakeboardcouncil.com)
2. The competition is announced to and sanctioned by the IWWF E&A Wakeboard Boat Council.
3. The competition is put on the official calendar at [www.wakeboardcouncil.com](http://www.wakeboardcouncil.com).
4. The competition is run in accordance with these rules, using the official calculation software.
5. A homologation dossier, complete results for all heats, including qualification rounds, and a list of all participating riders including date of birth and nationality, is sent to the Wakeboard Boat Council as soon as possible after the completion of the competition, in the appropriate format available at [www.wakeboardcouncil.com](http://www.wakeboardcouncil.com). This dossier should be sent no later than 30 days after the end of the competition.

There is a guideline available at [www.wakeboardcouncil.com](http://www.wakeboardcouncil.com) on how to homologate events that should be followed.

Results from all homologated competitions will be included in the official IWWF E&A ranking for the same year.

Any sanctioned or homologated event, excluding the National Championships, open to international riders must be homologated as an international event to the IWWF E&A. In the case of riders from outside E&A region competing at any E&A countries' National Championships, those riders must be excluded from the results.

Where a national federation allows foreign riders to ride at their National Championships, all E&A region riders will get their results counted towards the E&A ranking.

### **7.2 Fees**

Homologation fees for national and international events, as well as the additional fees for cash prize competition shall be applicable in accordance with the IWWF E&A Bye-Laws.

### **7.3 National Competitions and National Championships**

For homologated national competitions there must be 3 judges, all must be suitably qualified and recognised by the IWWF E&A Wakeboard Boat Council.

### **7.4 National Championships**

For national championships, at least the Chief Judge must be of International Level 2 standard, and all the other judges recognised by the IWWF E&A Wakeboard Boat Council.

### **7.5 International Events**

If five or more countries are represented at the event at least two of the judges must be of International Level 1 standard, and the rest of at least International Level 2 / National Level 1 standard.

If less than five countries are represented at the event at least one of the judges must be of International Level 1 standard, and one of at least International Level 2 / National Level 1 standard.

## **7.6 E&A Championships**

All judges must be of International Judge (Level 1) standard.

## **8 E&A WAKEBOARD RANKING LIST**

An IWWF E&A Wakeboard Boat ranking list will be created and results collected from homologated national events and tours, National Championships, international homologated events, the E&A Championships, and the IWWF World Championships.

The IWWF E&A Wakeboard Boat Council must receive a homologation dossier together with complete results from each homologated competition.

The riders' top 6 scores in these events will contribute to his/her ranking.

## **9 E&A CHAMPIONSHIPS**

### **9.1 Entry Requirements for E&A Championships**

#### **9.1.1 Rider Eligibility (In addition to IWWF Wakeboard World Rule 9.1)**

Only riders from Region E&A are eligible to enter the E&A Championships.

### **9.2 Competition Site During E&A Championships (Replaces IWWF Wakeboard World Rule 2)**

Once the Course has been set down in accordance with the Chief Judge, use of the site is not permitted until after the completion of the competition.

There will be no official familiarisation. The organiser, however, has the option to provide and charge for unofficial practice before the start of the competition. If the organizer chooses to use the official boat and/or course and/or feature it is the responsibility of the organizer to ensure that everything is in order for the start of the competition. The start of the competition may vary depending on the number of entries.

### **9.3 Officials**

The minimum number of officials in the panel at the E&A Championships:

Chief Judge  
Assistant Chief Judge  
Chief Calculator  
Assistant Calculator  
Chief Boat Driver  
Assistant Boat Driver  
5 Judges

## **9.4 Cancellation of part of E&A Championships**

The finals of each category must be completed to determine a winner, even if the Judges are obliged to continue at a different site. If a final cannot be completed, all riders from the unconcluded heats of the event will compete again where and when possible, until a winner is determined.

## **9.5 General Recommendations**

### **9.5.1 Late Entry (Replaces IWWF Wakeboard World Rule 10.2)**

A late entry fee of 10 € per day per competitor shall be levied on each entry not received 10 days before the end of registration.

### **9.5.2 Judges' Clothing**

Official clothes for the officials shall be provided by the organizer for the prize giving ceremony, opening ceremony, and competition.

### **9.5.3 Bulletin**

Every Bulletin must be approved by the Chairman of the IWWF E&A Wakeboard Boat Council before it is distributed.

### **9.5.4 Transportation**

Transfer from the airport to the official hotel has to be managed by the Organizer. Riders or teams may be charged for the cost of the service, but it must be free of charge for the officials.

Transfer between the official hotel and the competition site has to be managed by the Organizer and has to be free of charge for riders or teams. The Organizer may make a shuttle schedule such as, for example, two transfers in the morning and two transfers in the afternoon. Renting a car for officials is recommended to the Organizer.

### **9.5.5 Water**

Organisers are obligated to provide fresh drinking water for competitors and officials free of charge.